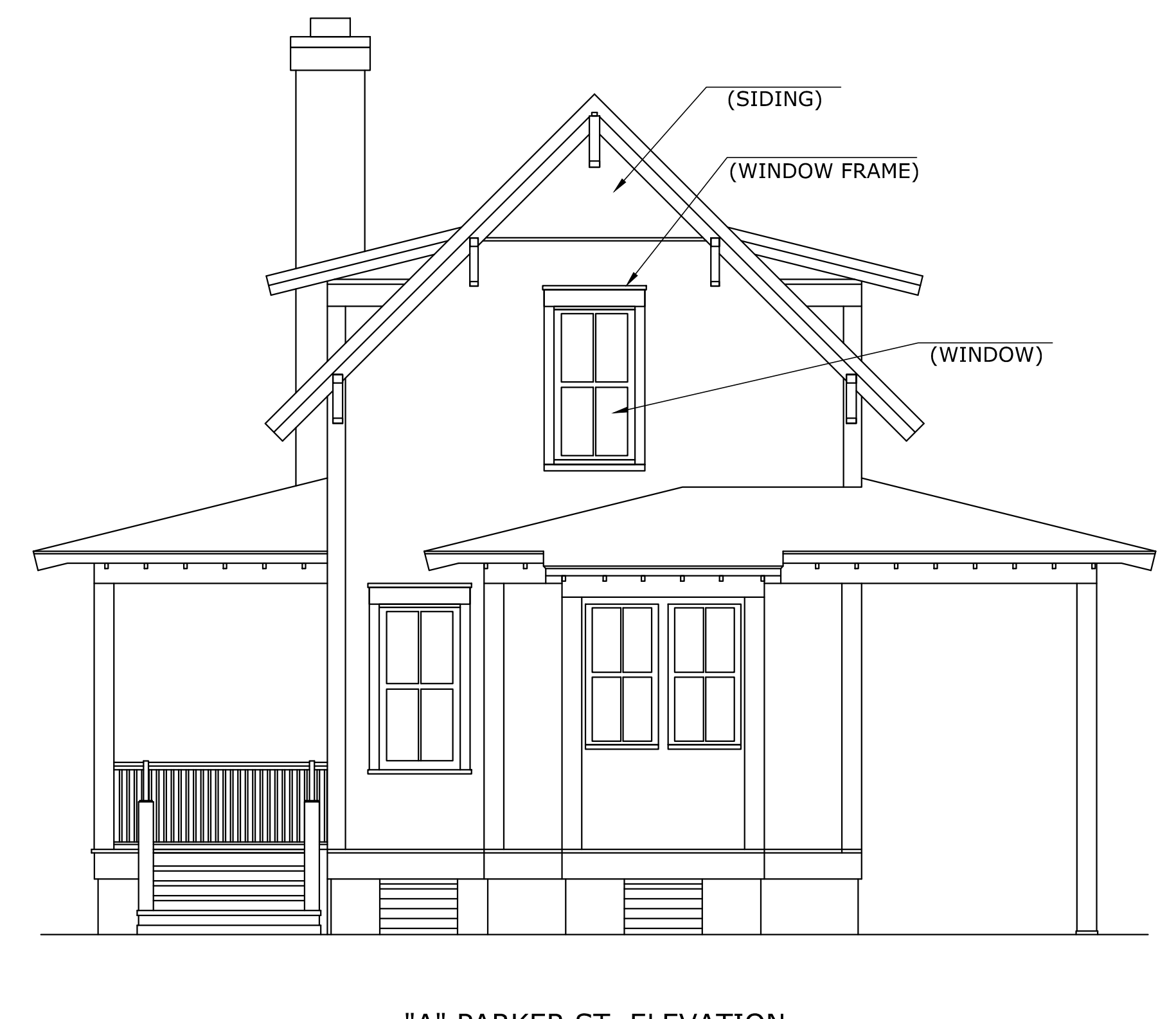


W:\2015\15-5795 North Bluffs Dev Corp - The Porches at Rockwater\Design Drawings\SUGARBERRY.dwg 1/13/17 at 12:47pm



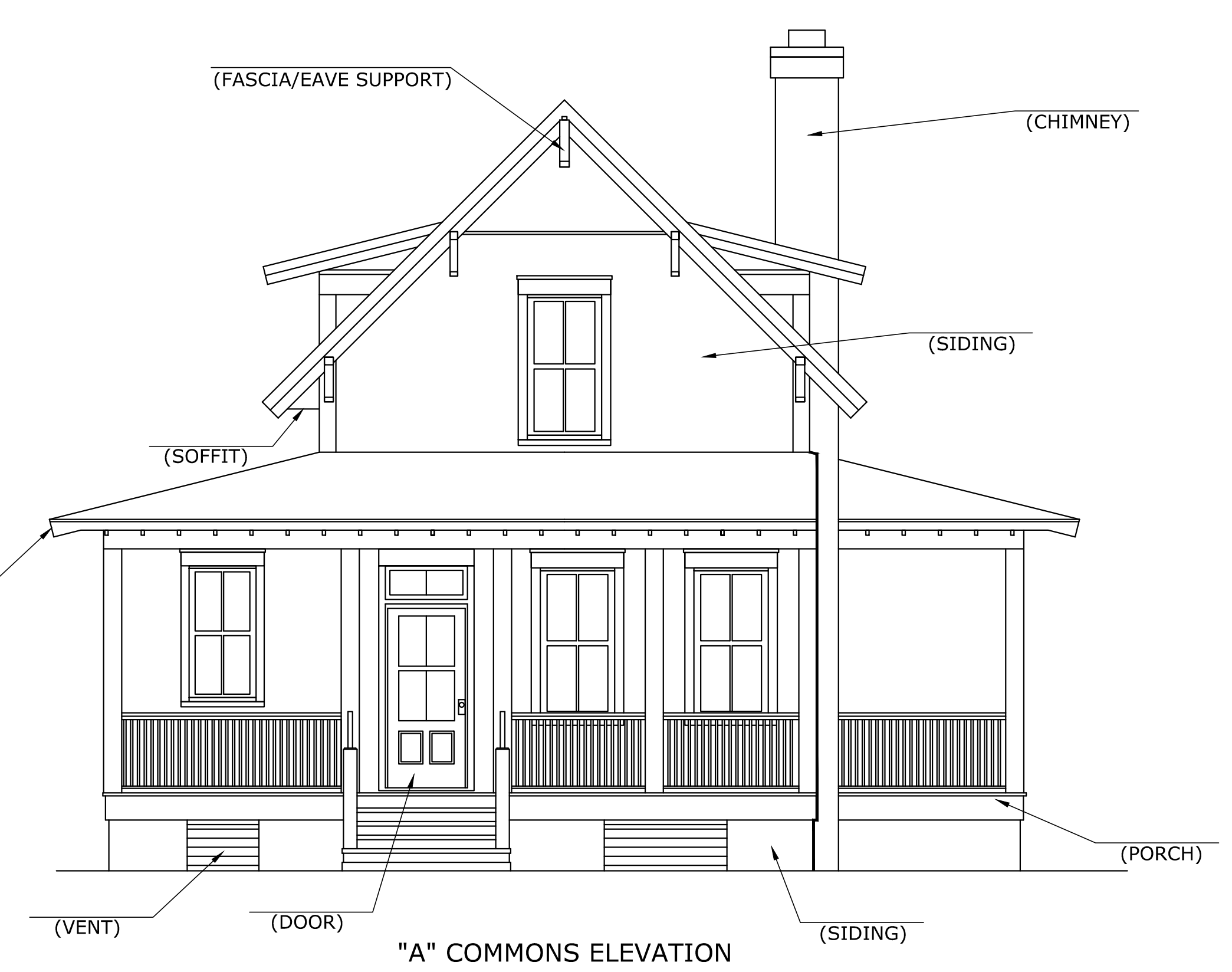
"A" LEFT ELEVATION



"A" PARKER ST. ELEVATION



"A" RIGHT ELEVATION



"A" COMMONS ELEVATION

**MCE McCLELLAND CONSULTING ENGINEERS, INC.**  
 DESIGNED TO SERVE  
 1810 N. College Fayetteville, Ar. 72702  
 741-46-2204 P# 479-443,2377 P# 501-571,0272  
 501 E. Alliance Blvd. Tulsa, Ok. 74146  
 P# 918-601-96803  
<http://www.mcclelland-engrs.com>

ORIGINAL SIGNATURE ON FILE

THE PORCHES AT ROCKWATER  
 LOT 1  
 NORTH LITTLE ROCK, ARKANSAS

One Call  
**811**  
 Know what's below.  
 Call before you dig.

NO.	DATE	REVISIONS DESCRIPTION

DEVELOPMENT  
 PLAN  
 "A"  
 ELEVATIONS

PROJECT ENGR: MK	DRAWN BY: BRIN SR.
DATE: JAN 10, 2017	
SCALE: N.T.S.	JOB NUMBER: LR15-5795